



A WALKING TOUR OF

THE CLAREMONT COLLEGES

PITZER COLLEGE OFFICE OF
ADMISSION



Hello, and welcome to The Claremont Colleges! This booklet will guide you on a tour of all five undergraduate colleges, and includes facts about each school.

The Claremont Colleges is a consortium of five prestigious small liberal arts colleges – **Pitzer College, Pomona College, Claremont McKenna College, Scripps College,** and **Harvey Mudd College** – and two graduate institutions – Keck Graduate Institute (KGI) and Claremont Graduate University (CGU). Located in sunny Claremont, CA, the consortium is home to approximately 6,500 students.

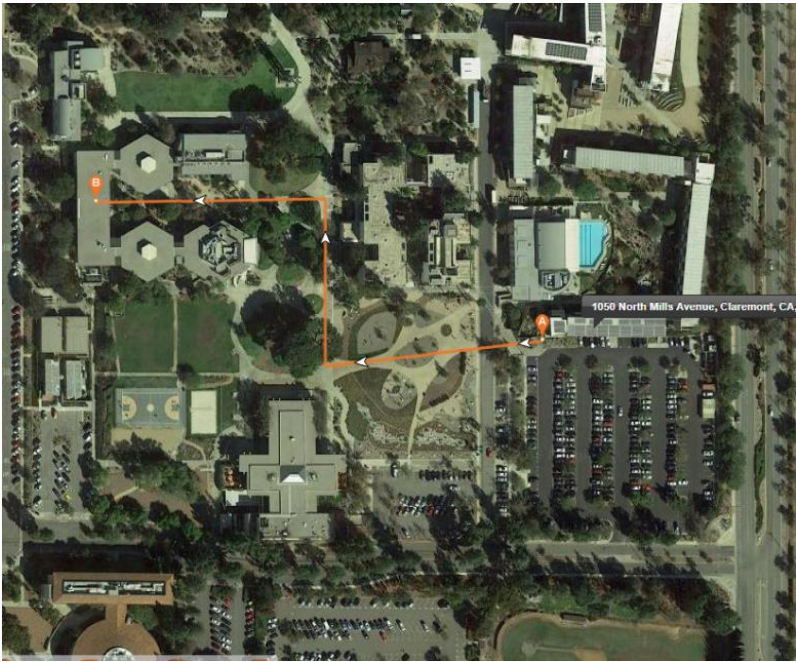
This tour can be completed in less than 90 minutes, depending on how many stops you make. The tour will begin at Pitzer’s Office of Admission and lead you through Harvey Mudd’s central courtyard, from where you will then head through Scripps’ Quad. From there, we’ll walk you through the facilities of The Claremont Colleges Services, cover Pomona’s north campus, head through Claremont McKenna’s Central Quad, and finally end back on Pitzer’s campus. Throughout the tour, we will point out places where you can refill your water bottles, as well as scenic spots for you to take a break! And remember, if you need help orienting yourself, **the mountains will always mark north.**

Since you are starting at the Pitzer College Office of Admission, let’s begin with some facts about our campus.





Welcome to Pitzer College! Pitzer was founded in 1963 by Russell K. Pitzer, and is home to 1,074 undergraduates. Some of our most popular majors include Psychology, Environmental Analysis, Economics, Sociology, Media Studies, English & World Literature, Human Biology, and Self-Designed majors. Pitzer has five core values that are central to our community: Social Responsibility, Intercultural Understanding, Interdisciplinary Learning, Student Engagement, and Environmental Sustainability.



Let's begin the walking portion of the tour by heading west, away from the Office of Admission and into the heart of our campus. As you walk through **Holden Garden**, you will see **Mead Residence Hall** on your right. Many juniors and seniors call Mead home, and its walls are covered with historic murals. Once you reach the end of the garden, turn right and head north towards the **Mounds**. The Mounds is a bustling campus hub, and is home to Pitzer's Rockabilly Festival, One Night Only (ONO) Festival, Kahoutek Music and Arts Festival, and other events throughout the year.

Did You Know? Pitzer is home to a small flock of chickens! Feel free to stop by their coop, located on the north side of Mead Hall, and say hello!

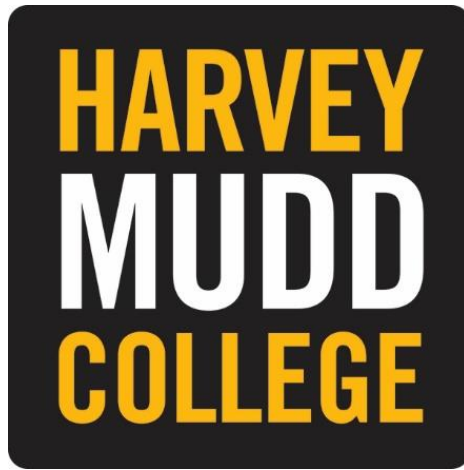
As you walk north through the Mounds in the direction of **Brant Clock Tower**, turn left before the final mound and head into Pitzer's **Academic Quad**. In these multi-use spaces, students from all five colleges collaborate in classes with interdisciplinary curricula taught by faculty from all field groups. You will also pass one of four eateries on Pitzer's campus, **The Pit Stop Café**. Feel free to walk inside and grab one of the best smoothies in all of Claremont! Continue walking until you reach **Scott Hall**.

Scott Hall is home to Pitzer's **Career Services**, where staff members work tirelessly to provide students with the skills and opportunities that they need to get the job of their dreams! Scott also houses the **Community Engagement Center (CEC)** where students can explore volunteer and internship opportunities with local organizations like

Prototypes Women's Center, The Pomona Economic Opportunity Center, Jumpstart tutoring and mentoring, and more!

Enter Scott Hall and walk through the doors directly in front of you. Exit Scott and you will see Mills Avenue. Walk to the end of the path and turn right. Head north on Mills Avenue to begin your tour of Harvey Mudd's campus.





Welcome to Harvey Mudd! As you can see, each of the Claremont Colleges has its own distinct look and feel. Harvey Mudd was chartered in 1955, and is home to 895 undergraduates. Harvey Mudd offers ten majors, including Biology, Chemistry, Computer Science, Engineering, Math, and Physics.

Did You Know? Most of Harvey Mudd’s academic buildings are connected by underground hallways known as “the Libra Complex”. Here you’ll find some research labs, machine shops, and the maker space. Also, the square bricks that make the walls look like Legos are called “warts”.

If you were to continue heading north, you would cross Foothill Blvd and reach the **Bernard Field Station**, home to the Robert Redford Conservancy for Southern California Sustainability. The Conservancy, which opened in 2018, features new LEED Platinum-certified facilities, outdoor laboratories and classrooms, and talking circles – discussion spaces created in collaboration with local Tongva elders.

Walk north on Mills Avenue until you reach the middle of the quad. When you reach the quad, turn left and head west, walking past the **East and West Residence Halls**. Keep walking until you reach the **Hoch-Shanahan Dining Commons**. This is Harvey Mudd's dining hall, best known for steak night and personalized pizza night. On the opposite side of the dining hall is **Jay's Place**, an underground pizza parlor open until 2 AM! Harvey Mudd is also home to the **R. Michael Shanahan Center for Teaching and Learning**, a LEED Gold-certified instructional building that includes an outdoor classroom.

Let's head to our next campus! Keep walking past the Hoch-Shanahan Dining Commons until you come across the circular quad on Harvey Mudd's campus. When you reach the quad, turn left and walk towards the street just south of Harvey Mudd. Turn left to continue along this street until you reach the crosswalk that leads to Scripps College. Cross the street and walk through the small parking lot until you reach the door that leads to Scripps' Rose Garden. Now, stop and smell the roses. No, seriously—they smell amazing! You can also admire the Graffiti Wall, and check out all of the messages from previous graduating classes at Scripps.





Welcome to Scripps College! Scripps is a women's college founded in 1926, and is home to 1,048 undergraduates. Top majors include Psychology, Biology, English, Media Studies and Politics

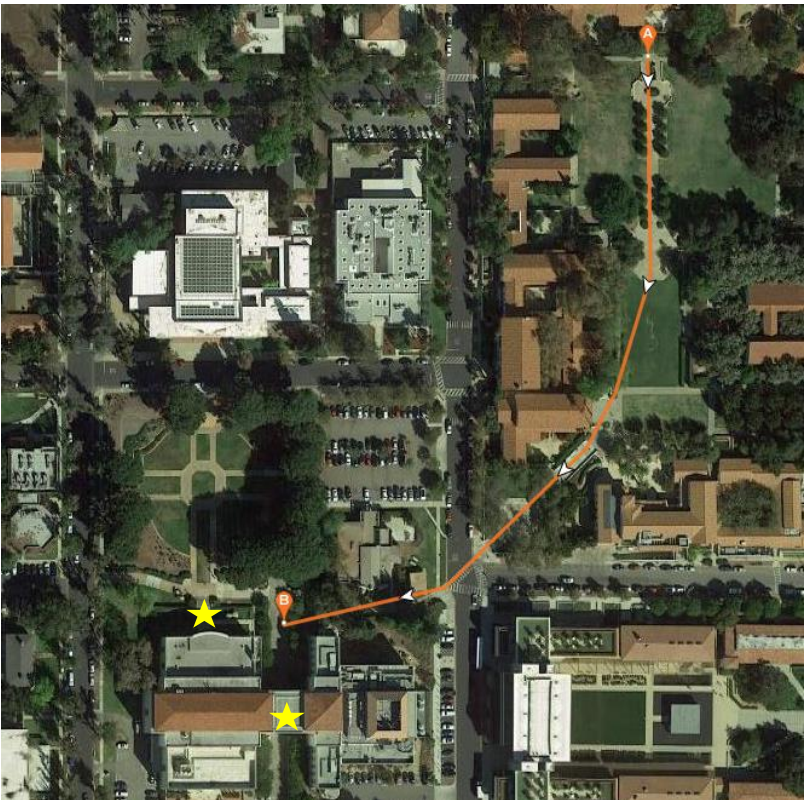
Continue walking along the path that cuts through the **Rose Garden** until you reach the first paved fork in the path. Turn right at the fork and continue walking east until you reach the middle of the large courtyard in the center of the Scripps Field. This courtyard is known as the **Jaqua Quadrangle**, and is home to several fruit trees (feel free to pick some!). Walk through the trees until you reach the end of the Jaqua path, and walk south straight across the grass field to the **Malott Dining Commons**. This is the Scripps Dining Hall, known for its amazing salads and weekly stir-fry nights.

Some of the other landmarks on Scripps' campus include the **Motley Coffeehouse** and the **Margaret Fowler Garden**. The Motley Coffeehouse is a student-run establishment that

not only serves up delicious coffee and tea, but also hosts workshops and open mics throughout the semester. The Margaret Fowler Garden is often referred to as the Secret Garden, and features art from famous muralists. The garden provides a spot of serenity in the middle of the campus.

Follow the diagonal path to your right to reach the 9th street entrance of Scripps College. Cross the diagonal sidewalk to the Honnold-Mudd Library.

Did You Know? Scripps has an annual tradition of harvesting the olives from olive trees around campus and pressing them into olive oil!



Honnold-Mudd Library is your first look into the joint resources of The Claremont Colleges! Honnold-Mudd is a resource for students from all seven schools. On weekdays, the library is open until 1 AM! On the north side of the library is the McAlister Center, which is the religious center for students at the 5Cs. The McAlister Center sponsors a full schedule of worship services and a wide range of events and programs under the sponsorship of the Buddhist, Catholic, Christian Science, Hindu, Interdenominational Christian, Jewish, Latter Day Saints, Muslim and Zen Meditation groups, as well as other on-campus religious and spiritual groups. The chaplains maintain liaison with religious institutions and social service agencies in the surrounding communities.

If you want to explore the library, there are two main entrances, noted by stars on the map on page 10. Feel free to check out the café area on the first floor of the library (located at the leftmost star). This would be a great spot to refill your water bottles and take a break from walking!

Continue your tour by following the curved path and stairs west until you reach the walkway that runs in-between the two library buildings on your left. Follow that walkway until you reach the curve, and then turn right towards the curved sidewalk in North Dartmouth Avenue. Walk to the crosswalk, and cross west over North Dartmouth Avenue past the stop sign to reach the Huntley Bookstore. This bookstore services all seven of The Claremont Colleges and has gear representing each school. Stop in and grab a tee shirt or pennant to show your 5C pride!



Use the crosswalk and walk toward the E. 8th Street sign to reach the rest of The Claremont Colleges' shared resources. Once you cross the street, the Tranquada Student Services Building is on your left. Tranquada houses Student Health Services, Monsour Counseling and Psychological Services, Health Education Outreach, and the Office of Chicano/Latino Student Affairs. If you continue walking south on this path, you will pass the Office of Black Student Affairs to your right as well as our Campus Safety Department, which serves the

entire Consortium. A bit further down 7th Street is the Sontag Center for Collaborative Creativity, otherwise known as The Hive. The Hive’s goal is to accelerate the creative development of students across the 5Cs through exploration, collaboration and experiential learning! Continue following the path south toward Skyspace Quad. If you are here around sunset, stay a while and experience James Turrell’s Skyspace “Dividing the Light”. Gather on the benches beneath the canopy. At dusk and dawn, a lighting program bathes the canopy in changing colors, from goldenrod to turquoise, altering viewers’ perception of the sky.





Pomona College

Welcome to Pomona College! Pomona was founded in 1887 and houses approximately 1,677 undergraduates. Top majors include Economics, Computer Science, Mathematics, Neuroscience, and Politics.

Exit Skyspace Quad past the fountain and turn left to walk east toward North College Avenue. You are now walking past Pomona's academic buildings. When you reach North College Way, make a right and head south toward the intersection. Cross the street and head south onto Pomona's campus. Right as you cross the street, stop, and you will see the **Smith Campus Center** to your right.

The Smith Campus Center holds classrooms, meeting areas, and the **Coop Fountain**. The Coop Fountain is another example of one of our many student-run eateries at the 5Cs! Need a rest? Stop here! The Coop Fountain has indoor and outdoor seating, and is a great spot to see students from the Colleges while grabbing a bite to eat.

Continue on the large pathway that leads south until you reach **Bridges Auditorium**, the 5Cs' largest venue for music, theatre and the performing arts, on your left. Amelia Earhart, The Black Eyed Peas and Hillary Clinton have all graced the stage of "Big Bridges," as students call it!



Right before passing Big Bridges, turn left down the path to catch a glimpse of Pomona-Pitzer Athletics! You'll pass right by the **Rains Center Athletics Complex** on your left where our Pomona-Pitzer athletes train. Follow this path to the end and you will get a firsthand look at the Pomona-Pitzer baseball and football fields. Pomona and Pitzer share 21 Division III varsity athletic teams. Our rivals—the Claremont McKenna, Harvey Mudd, and Scripps (CMS) Stags and Athenas—are just across the street! To your right, you will also see a peek of Pomona's beautiful curved glass **Studio Art Hall** that houses student studio spaces, a metalsmithing workshop, a darkroom, and many other start-of-the-art resources.

This is the furthest south that this tour will take you on Pomona's campus, but if you were to continue exploring, you would run into the **Oldenburg Dining Hall**, **Frank Dining Hall**, and the **KSPC radio station**! Oldenburg Dining Hall is a language-learning dining hall that allows students to practice the languages that they are learning in class. The KSPC radio station is a student- and volunteer-run radio

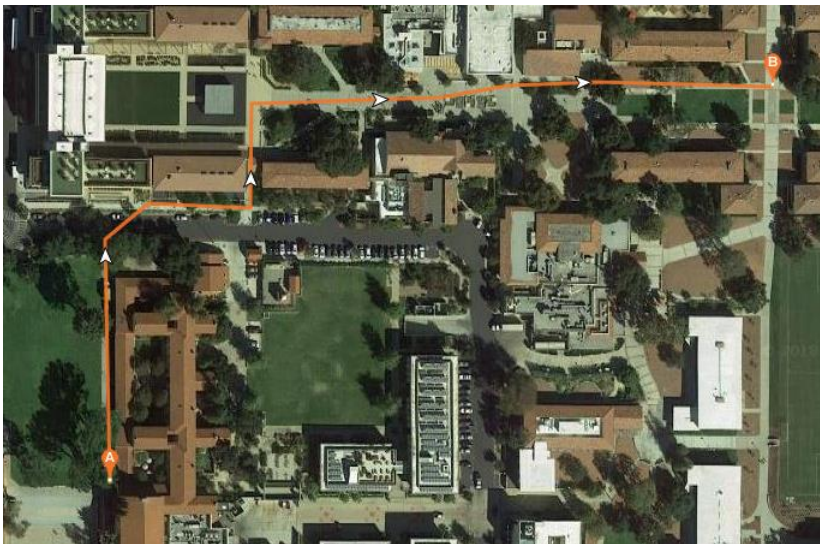
station open to 5C students and the greater Claremont community. Once you are a 5C student, you can get involved by hosting your own weekly radio show!

On the other side of Pomona's campus is the Claremont Village, where 5C students go when they want to get off campus. Check out Laemmle movie theater, Eureka!, 21Choices frozen yogurt, and many more amazing eateries!

Did You Know? The number 47 has mystical qualities for Pomona students. Among other things, Pomona is located at freeway exit 47, the top row of the Lyman Hall organ has 47 pipes, and there were 47 students in Pomona's first class.



Turn left at the fork to head north. Cross 6th Street and walk through the archway in front of you. We are now back on the north side of Pomona's campus, and only a few feet away from **Frary Dining Hall**. If you walk straight, you will see archways and a staircase to the right that lead to the entrance of the dining hall. Head north toward the big grassy area. You are now passing **Walker Beach**, where you will often see 5C students sunbathing all year round thanks to Claremont's amazing weather! If you follow the path along the right edge of Walker Beach, you should see the Honnold-Mudd Library to your left, and an opening in the orange walls in the building directly in front of you.



After you cross the street and walk through the building, you are in the middle of Claremont McKenna's campus. To your right you should see The Cube, an all glass building that serves as a beautiful study space.



Welcome to Claremont McKenna College! Founded in 1946 as Claremont Men's College, CMC went all-gender in the 1970s and is home to about 1,334 undergraduates. Top majors include Economics, Government, International Relations, Psychology, and Neuroscience.

If you turn to your right, you will see a large pathway past The Cube that leads you through the middle of CMC. Continue east on the path and you will pass **The Hub** on your left and **The Marian Miner Cook Athenaeum** on your right.

The Hub is one of the 5C eateries that is open late. If you ever feel like eating a burger at midnight, then The Hub is the spot to go! The Marian Miner Cook Athenaeum is where CMC hosts most of their speaker series.

Did You Know? The Athenaeum is a formal, sit-down dinner venue open to all community members, so dress to impress and attend a talk!

If you continue walking, on the other side of the Athenaeum is **Collins Dining Hall**. Collins is known for its flatbread pizza nights! Across from the dining hall is International Place. I-Place serves as a resource center for international

students from all seven schools, including our graduate institutions.

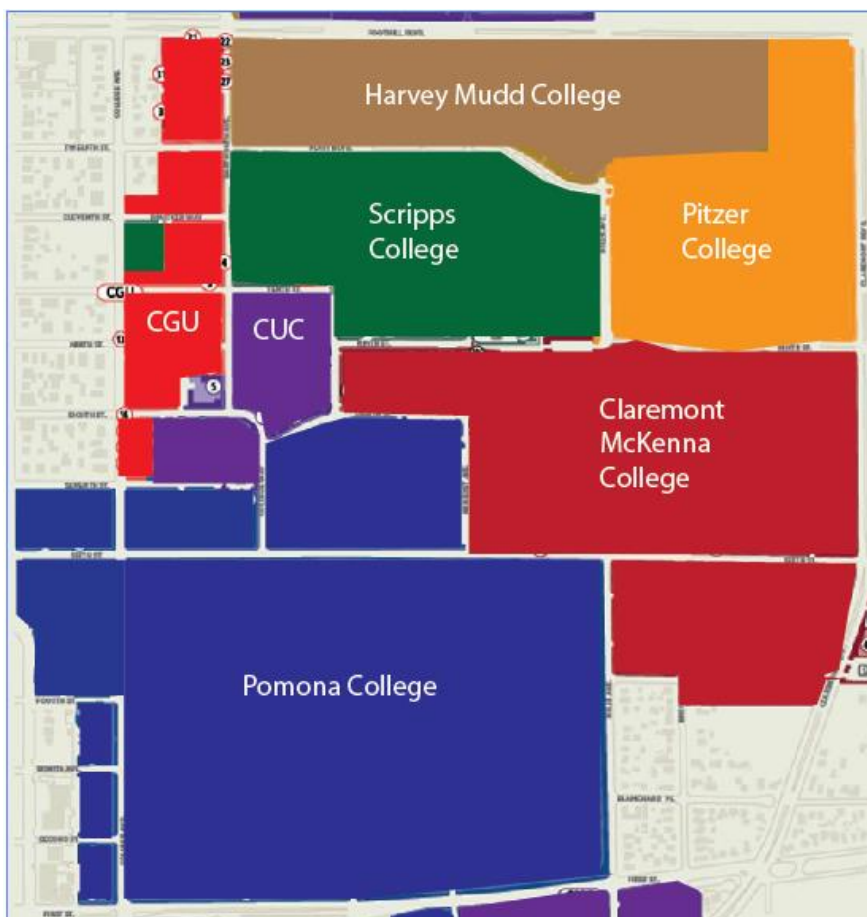
As you continue walking on the path, you will pass some of CMC's residence halls in North Quad. Continue walking past the residence halls until you can see academic buildings straight ahead and an intersection to your left. Turn left and head north towards the large white building known as the Keck Science Department. Cross the road, and stop just outside of Keck.

The Keck Science Department is a shared science resource that serves Claremont McKenna, Scripps, and Pitzer colleges. Here, you can find fully-stocked lab facilities and classes ranging from Environmental Analysis to Physics. Feel free to enter the first floor of Keck Science if you would like to read this year's senior thesis poster presentations!



At this point, cross 9th Street to return to Pitzer's campus. You should pass the Pitzer sign as you begin your walk up the stone staircase and along the dirt path to your right. The path will lead you to **McConnell Dining Hall** as you pass through the multi-species commons. To your left should be the basketball court and the beach volleyball court. To get back to the Office of Admission, continue past the dining hall and Mounds to reach Holden Garden. The Office of Admission is directly across the service road. Feel free to stop by the Office if you have any additional questions!

Thank you for joining us on this tour. We are so glad to have you exploring The Claremont Colleges!



**Walking tour created by Natalia Duran, Pitzer
College Class of 2019 for the Pitzer College
Office of Admission**

Offices of Admission & Financial Aid

Pitzer Hall
1050 North Mills Avenue
Claremont, CA 91711

Phone: 909.621.8129
Fax: 909.621.8770
admission@pitzer.edu

Financial Aid: 909.621.8208
financial_aid@pitzer.edu

